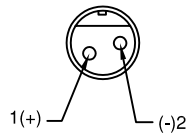
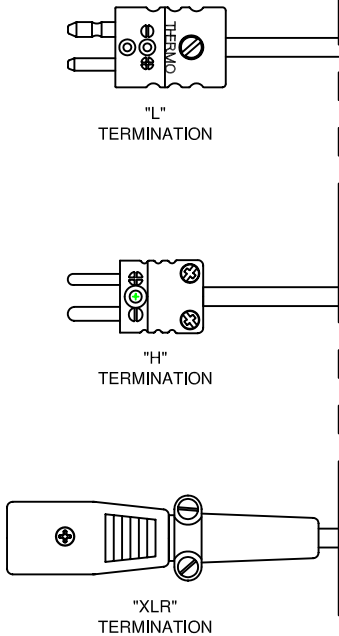
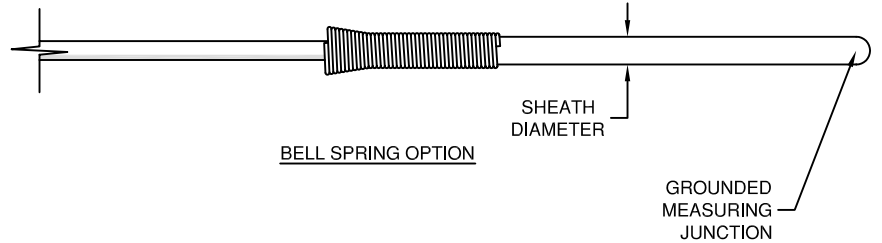
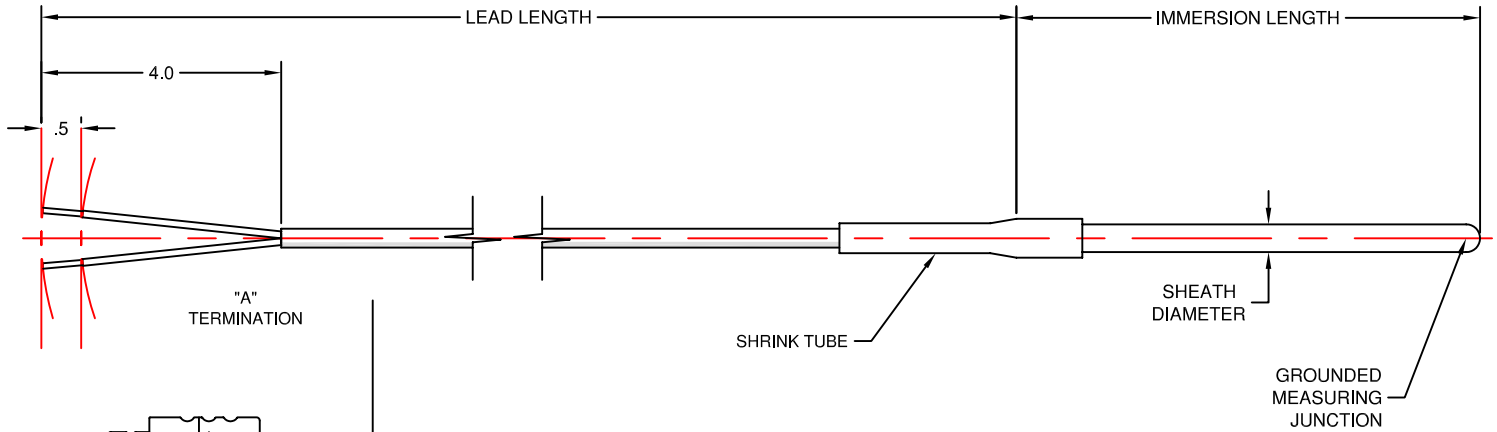


# PHARMACEUTICAL & BIOTECH THERMOCOUPLES & RTD'S



## SPECIFICATIONS

Sheath Material: 316/316L Stainless Steel  
 Sheath Finish: #4, Ra of 32 µin Max.  
 Temperature Range: -58 to +500° F.  
 Lead Wire:

Conductor Size: 24 Gauge Stranded  
 Conductor Material: Matching TC Alloy  
 Insulation: Teflon(FEP)  
 Jacket: Teflon(FEP)

## Pin Connectors

Body Material: Glass Filled Thermoplastic  
 Pin Material: Matching TC Alloy  
 Polarized Pins  
 Spring Loaded Inserts  
 Single Captive Cover Screw  
 Maximum Temperature Limit: 390°F (200°C)  
 Maximum Wire Diameter: .079"

## XLR Connectors

Shell Material: Aluminum Alloy  
 Contact Material: Copper Alloy  
 Type: Audio, keyed  
 Maximum Temperature Limit: 257°F (125°C)

CEPCDM - J - 14 - 4 - 36 - XLR - BS

CODE	OPTION (1/4" DIA. ONLY)
BS	BELL SPRING OPTION

CODE	TERMINATION
A	BARE ENDS
L	STANDARD SIZE PLUG
H	MINIATURE 2 PIN PLUG
XLR	AUDIO "XLR" PLUG

CODE	LEAD LENGTH (IN INCHES)

CODE	IMMERSION LENGTH (IN INCHES)

CODE	SHEATH DIAMETER
18	1/8" (.125")
316	3/16" (.187")
14	1/4" (.25")

CODE	THERMOCOUPLE CALIBRATION
J	IRON (+) vs CONSTANTAN (-)
K	CHROMEL (+) vs ALUMEL (-)
T	COPPER (+) vs CONSTANTAN (-)
E	CHROMEL (+) vs CONSTANTAN (-)



TEMPERATURE MEASUREMENT DESIGNER'S GUIDE  
 WWW.THERMO-ELECTRIC-DIRECT.COM

## SECTION CEPC

## DIRECT MONITORING SYSTEM REPLACEMENT THERMOCOUPLE

The information contained hereon shall be considered the sole property of Thermo Electric Company, Inc. The recipient thereof agrees not to disclose or reproduce said information to parties outside the recipient's organization without the written permission of Thermo Electric.

Doc. No.: TE-CO010109-CEPC-200