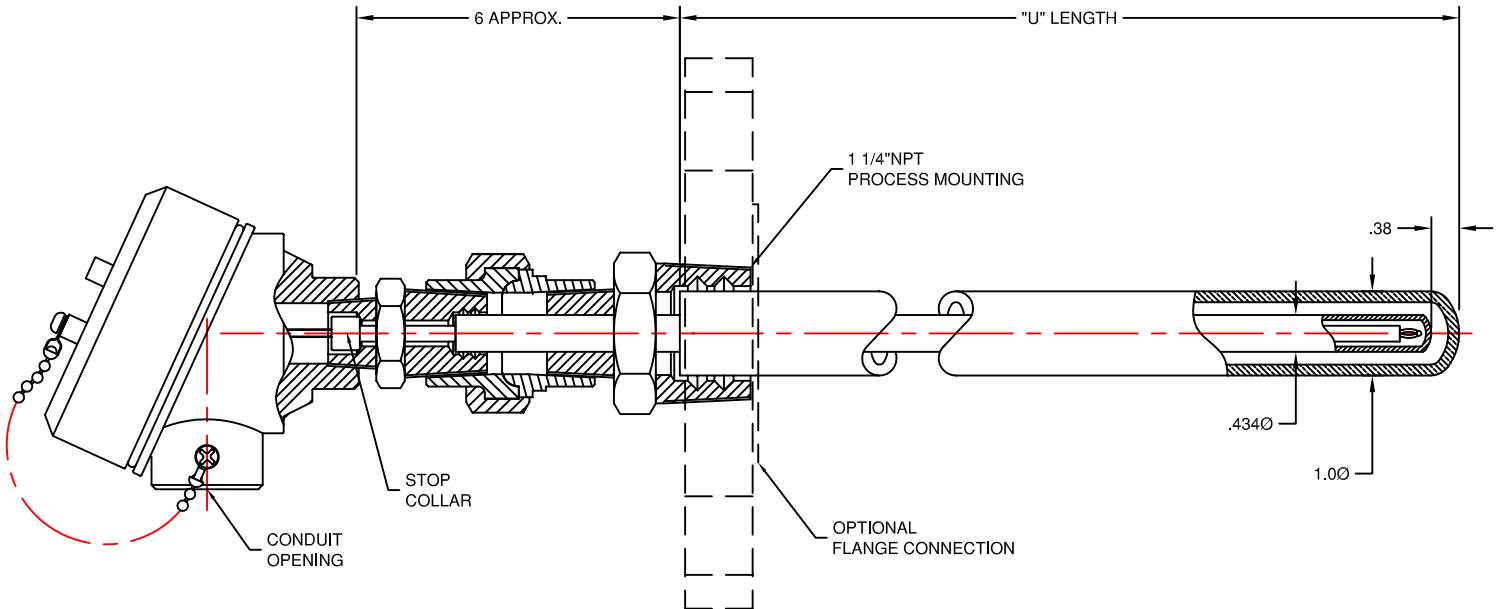


INDUSTRIAL THERMOCOUPLES



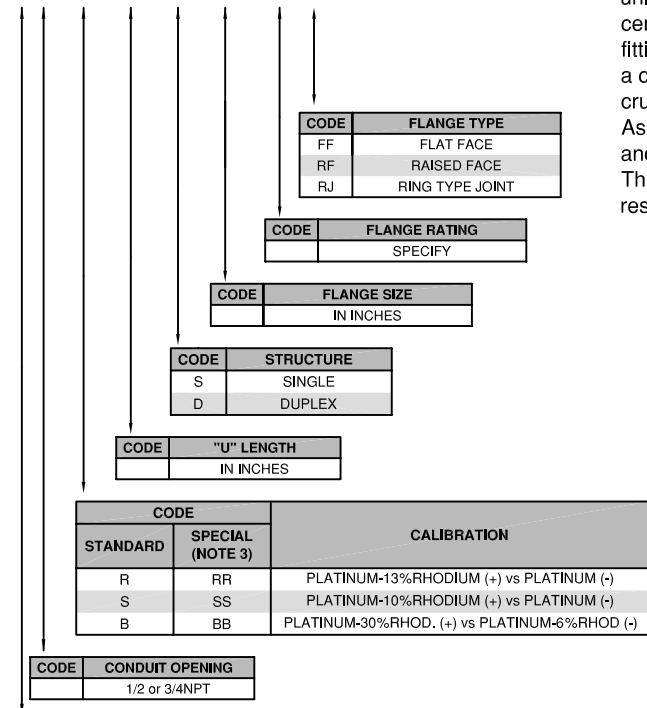
This double tube construction allows the use of an alumina primary tube which protects the element and a silicon carbide secondary (or outer) tube which protects the alumina tube from the thermal shock associated with startup conditions.

The alumina inner tube is attached to the upper fitting (between head and union) with a high temperature cement. The silicon carbide outer tube is cemented to the process fitting. Grooves for the tube are machined into the fittings provide additional holding strength. The thermocouple is equipped with a collar seated in the inner fitting to prevent the measuring junction from being crushed.

Assemblies can be used in an oxidizing atmosphere up to 1900°F (1600°C) and 3600°F (2000°C) in a reducing atmosphere.

This unique design seals the thermocouples and prevents breakage by restricting movement of the tubes. Protection tubes are field replaceable.

TC29620-AN³/₄-R-12-S-1.5-300 RF



SPECIFICATIONS

- Calibration: R, S or B
- Element Size: 24 gauge
- Element Insulator: 2 or 4 hole Alumina Beads
- Stop Collar: Mullite Bead
- Upper Fitting
 - Size: 1/2" by 3/4"NPT
 - Material: Stainless Steel
- Union
 - Size: 3/4"NPT
 - Material: Steel, (Stainless Steel Available)
- Process Fitting
 - Size: 3/4" by 1 1/4"NPT
 - Material: Stainless Steel
- Primary Tube
 - Size: 7/16"OD by 5/16"ID
 - Material: High purity Alumina
- Secondary Tube
 - Size: 1"OD by 9/16"ID
 - Material: Recrystallized Silicon Carbide

Notes:

- (1) Rated NEC class 1, Groups B, C and D.
- (2) ATEX approved EEx d IIC, T6.
- (3) Meets or exceeds Special Initial Calibration Tolerances per ANSI MC96.1-1982 and ASTM E230-1993.
- (4) For an item that does not fall within the catalog description an (SP) can be added to the ordering code as part of a custom construction.

| CODE | CONNECTION HEAD | | |
|------|--------------------------------------|---|-------|
| | MATERIAL | TYPE | NEMA |
| AN | ALUMINUM | WATER PROOF | 4 |
| SN | STAINLESS STEEL | WATER PROOF, CORROSION RESISTANT | 4, 4X |
| AE | ALUMINUM | EXPLOSION PROOF (NOTE 1) | 4 |
| SE | STAINLESS STEEL | EXPLOSION PROOF, CORROSION RESISTANT (NOTE 1) | 4, 4X |
| XD | ALUMINUM | EXPLOSION PROOF, FM, CSA APPROVED (NOTES 1 & 2) | 4, 4X |
| A | CAST IRON | WEATHER PROOF, RUGGED | |
| AX | ALUMINUM, LARGE DEVICE, EPOXY COATED | EXPLOSION PROOF, ATEX APPROVED (NOTE 3) | 4 |



TEMPERATURE MEASUREMENT DESIGNER'S GUIDE
WWW.THERMO-ELECTRIC-DIRECT.COM

SECTION INTC DOUBLE CERAMIC PROTECTION TUBE ASSEMBLIES THREADED or FLANGED

The information contained hereon shall be considered the sole property of Thermo Electric Company, Inc. The recipient thereof agrees not to disclose or reproduce said information to parties outside the recipients organization without the written permission of Thermo Electric.

Doc. No.: TE-CO010109-INTC-230