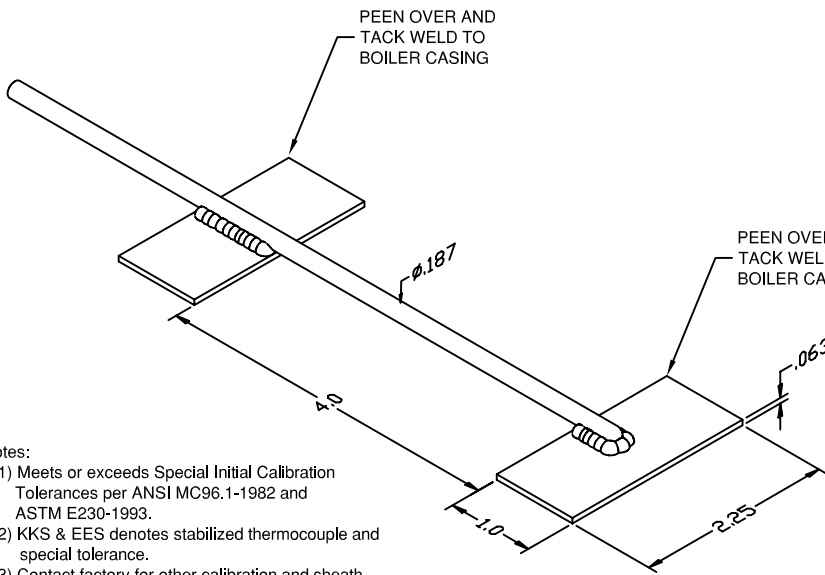


# INDUSTRIAL THERMOCOUPLES

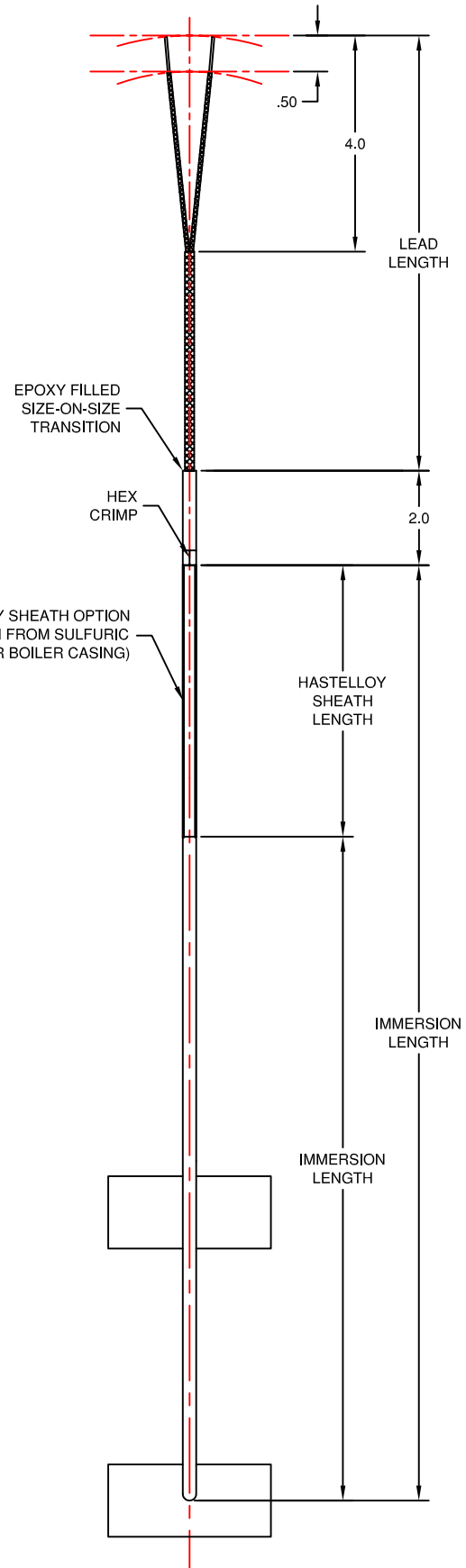


**Notes:**

- (1) Meets or exceeds Special Initial Calibration Tolerances per ANSI MC96.1-1982 and ASTM E230-1993.
- (2) KKS & EES denotes stabilized thermocouple and special tolerance.
- (3) Contact factory for other calibration and sheath combinations.
- (4) For an item that does not fall within the catalog description an (SP) can be added to the ordering code as part of a custom construction.

**Specifications**

- (1) Lead Wire Standard 20 gauge stranded conductors, Fiberglass insulation and jacketed.
- (2) Measuring Junction: Single, Grounded
- (3) Sheath Insulation: Hard Packed MgO.
- (4) Weld pad of same material as sheath unless specified otherwise.
- (5) Pad size, 2.25" by 2.25" by .063" thk.



CODE		CALIBRATION
STANDARD	SPECIAL (NOTE 1)	
J	JJ	IRON (+) vs CONSTANTAN (-)
K	KK	CHROMEL (+) vs ALUMEL (-)
E	EE	CHROMEL (+) vs CONSTANTAN (-)
N	NN	NICROSIL (+) vs NISIL (-)
-	KKS	CHROMEL (+) vs ALUMEL (-) (NOTE 2)
-	EES	CHROMEL (+) vs CONSTANTAN (-) (NOTE 2)

CODE	MEASURING JUNCTION
G	SINGLE GROUNDED, GROUNDED TO SHEATH
U	SINGLE UNGROUNDED, ISOLATED FROM SHEATH

CODE	ELEMENT SHEATH MATERIAL	STANDARD CALIBRATIONS (NOTE 3)
P	304 STN. STL.	J, K, T
R	316 STN. STL.	J, K, T, E, N
Q	310 STN. STL.	J, K, E
J	INCONEL 600	K, N, KKS, EES (NOTE 2)

CODE	IMMERSION LENGTH (IN INCHES)

TC29080 - [ ] - 316 - [ ] - [ ] - [ ] - [ ] - [ ] - [ ]  
 K - 316 - G - R - 60 - 36 - HC - 60

CODE	HASTELLOY LENGTH (IN INCHES)

CODE	OPTIONAL
HC	HASTELLOY SHEATH

CODE	LEAD LENGTH (IN INCHES)



TEMPERATURE MEASUREMENT DESIGNER'S GUIDE  
 WWW.THERMO-ELECTRIC-DIRECT.COM

## SECTION INTC TUBE SKIN THERMOCOUPLES BOILER CASING

The information contained hereon shall be considered the sole property of Thermo Electric Company, Inc. The recipient thereof agrees not to disclose or reproduce said information to parties outside the recipient's organization without the written permission of Thermo Electric.

Doc. No.: TE-CO010109-INTC-300