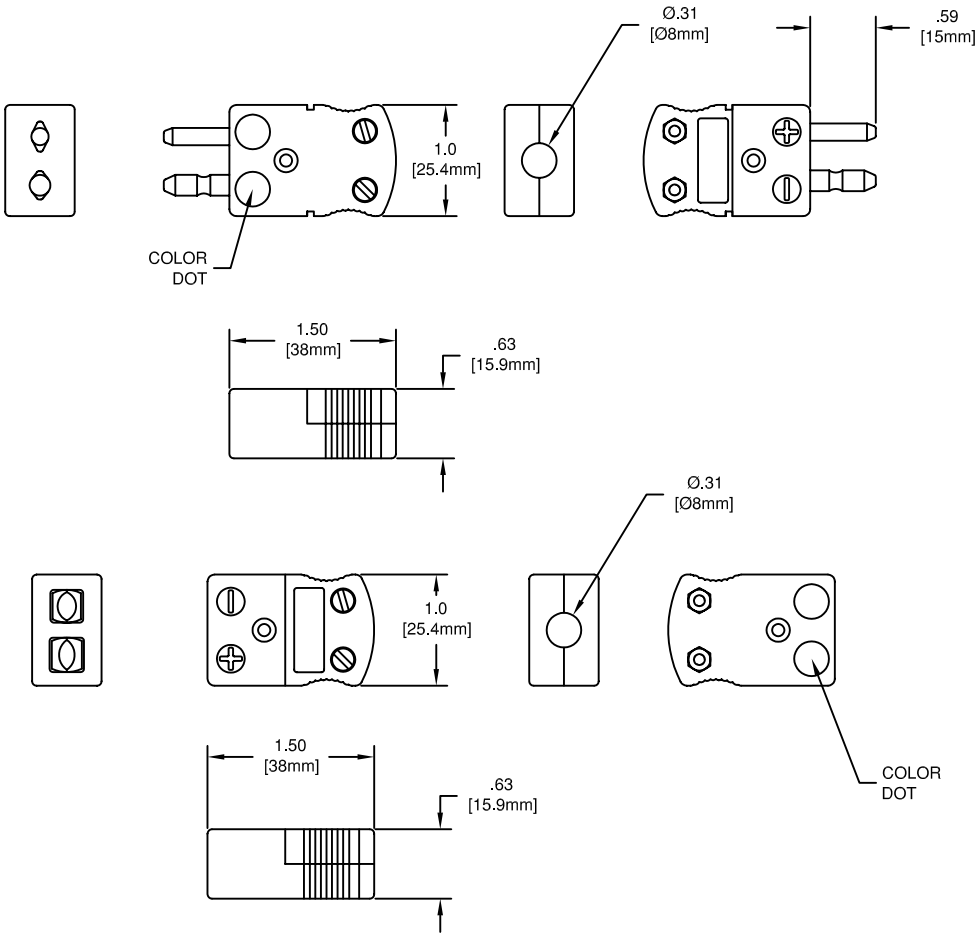


# CONNECTORS



## ULTRA TEMP CONNECTORS

Designed for use where thermocouple circuits must be installed at elevated temperatures these connectors provide an ideal method of quick interconnection in such environments.

Copper vs Constantan (ISA-T) can be used accurately up to 750°F (380°C). Connectors for the noble metal types ISA-R and S are compensating alloys limited to 500°F (260°C).

Sides are recessed for easy finger grips.

### SPECIFICATIONS

#### CONNECTORS

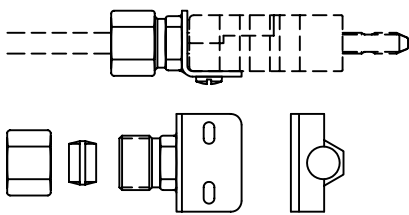
Color Dot Identification: ANSI-MC96 or IEC  
 Pin & Insert Material: Thermocouple Alloys  
 Body Material: High Strength Ceramic  
 Polarized Pins  
 Spring Loaded Inserts  
 Cover Screws with recess nuts  
 Maximum Temperature Limit: 1200°F (650°C)  
 Maximum Wire Diameter: .079" (14Ga)

#### ACCESSORIES

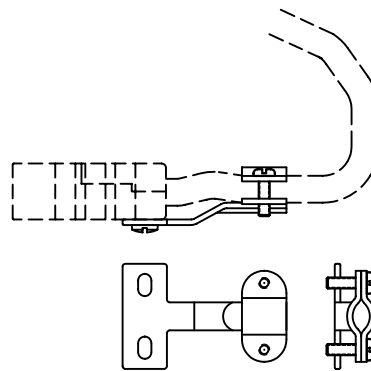
Compression Brackets: Stainless Steel, Brass insert,  
 Includes Mounting Screws  
 Wire Clamp Brackets: Stainless Steel,  
 Includes Mounting Screws

## ACCESSORIES

ORDERING CODE (ANSI)			ORDERING CODE (IEC)			CALIBRATION		SYMBOL
PLUG	JACK	BODY COLOR	PLUG	JACK	BODY COLOR	POSITIVE (+)	NEGATIVE (-)	
CO-43101	CO-43201	BLACK	CO-43101-IEC	CO-43201-IEC	BLACK	IRON	CONSTANTAN	JX
CO-43102	CO-43202	YELLOW	CO-43102-IEC	CO-43202-IEC	GREEN	CHROMEL	ALUMEL	KX
CO-43103	CO-43203	BLUE	CO-43103-IEC	CO-43203-IEC	BROWN	COPPER	CONSTANTAN	TX
CO-43104	CO-43204	GREEN	CO-43104-IEC	CO-43204-IEC	ORANGE	COPPER	ALLOY 11	SX/RX
CO-43105	CO-43205	PURPLE	CO-43105-IEC	CO-43205-IEC	VIOLET	CHROMEL	CONSTANTAN	EX
CO-43106	CO-43206	WHITE	CO-43106-IEC	CO-43206-IEC	WHITE	COPPER	COPPER	BX
CO-43107	CO-43207	ORANGE	CO-43107-IEC	CO-43207-IEC	PINK	NICROSIL	NISIL	NX



COMPRESSION BRACKET	
ORDERING CODE	SHEATH DIAMETER
BK/FT20985-2	1/16" (.063)
BK/FT20985-3	1/8" (.125)
BK/FT20985-4	3/16" (.187)
BK/FT20985-5	1/4" (.25)



WIRE CLAMP BRACKET	
ORDERING CODE	
BK/CL26000-4	



TEMPERATURE MEASUREMENT DESIGNER'S GUIDE  
 WWW.THERMO-ELECTRIC-DIRECT.COM

## SECTION CONN QUICK-COUPLING ULTRA TEMP

The information contained hereon shall be considered the sole property of Thermo Electric Company, Inc. The recipient thereof agrees not to disclose or reproduce said information to parties outside the recipient's organization without the written permission of Thermo Electric.

Doc. No.: TE-CO010109-CONN-070